



SINGLE OPERATOR
ESD TRACTION DEVICE

TRACMOTION

NEW

FUJIFILM
Value from Innovation



TRACMOTION



TRACMOTION

360° ROTABLE JAWS

NO LOCKING MECHANISM NEEDED

POTENTIAL FOR BETTER VISUALISATION

SINGLE OPERATOR CAPABILITY

PRECISE MOVEMENT, FASTER PROCEDURES

To simplify the lesion extraction process, Fujifilm has developed the TRACMOTION traction product for ESD. It is designed to potentially facilitate enhanced visualisation. It is expected to simplify the lesion excision process to allow for greater control and manoeuvrability during ESD procedures.

TRACMOTION is equipped with 360° rotatable jaws, enabling easy grasping and re-grasping of large lesions.

TRACMOTION SINGLE OPERATOR ESD TRACTION DEVICE

Model	Material Code	Ø Outer, insertion portion (mm)	Working length (mm)	Compatible endoscope
GF3612RT	16747076	3.6	1,240	EI-740D/S and Dual Channel Endoscopes with 3.7 mm minimum instrument channel diameter and 1,030 mm working length



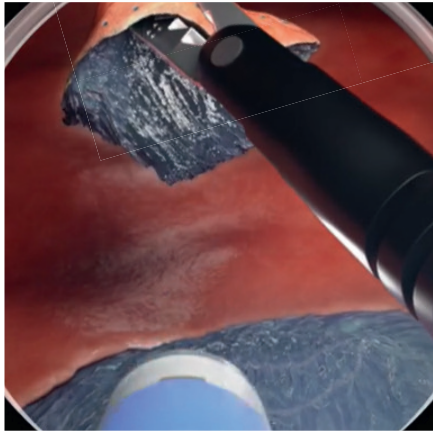
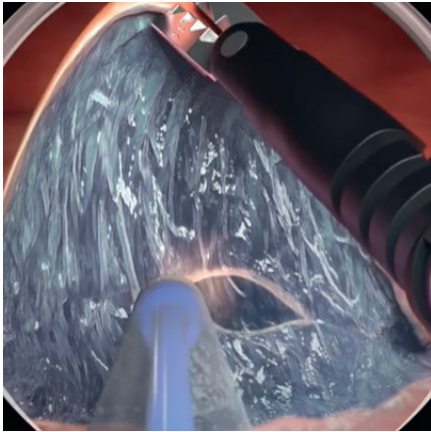
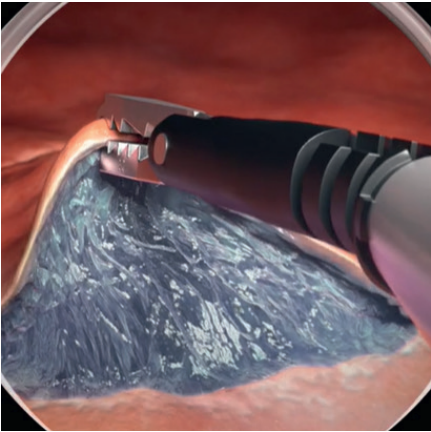
GF3612RT

Compatibility with Dual Channel Endoscopes

TRACMOTION is designed to work simultaneously and unobtrusively with an ESD knife using a dual channel endoscope. It is compatible with the Fujifilm EI-740D/S Dual Channel Endoscope as well as other dual channel endoscopes that have one 3.7 mm (or larger) instrument channel and a working length of 1,030 mm. With TRACMOTION, ESD also is expected to be performed in retroflexion to further enhance visualisation in challenging anatomy.

Simplifying ESD

With TRACMOTION, an endoscopist uses simple single-hand movements to control the distal end of the product, independent of the endoscope's movement. TRACMOTION can hold tissue during ESD without complicated locking mechanisms, potentially adding efficiency during this advanced procedure. In addition, performing ESD with TRACMOTION is expected to allow for en bloc extraction while reducing the amount of lifting agent, the number of device exchanges, and the procedure time. As an intuitive retraction tool, TRACMOTION simplifies the lesion extraction process, and offers the potential to endoscopists to reduce their time in both learning and performing ESD procedures.





FUJIFILM

FUJIFILM Europe GmbH

Balcke-Dürr-Allee 6 | 40882 Ratingen, Germany
Tel.: +49 2102 5364-0 | endoscopy_eu@fujifilm.com
www.fujifilm-endoscopy.com

Specifications are subject to change without notice. The name FUJIFILM and the FUJIFILM logo are trademarks of FUJIFILM Corporation. All other trademarks shown are trademarks of their respective owners. All rights reserved. 10/2022.